



# EARLY HEAD START CHILD CARE NETWORK 2022 ANNUAL REPORT

## PROGRAM OVERVIEW

Early Head Start is a comprehensive program designed to support Marion County’s most vulnerable early learners in achieving school success through high-quality early care and education. Early Head Start teachers create positive learning experiences to meet the individual needs of each child and provide services and partnership to support the entire family’s wellbeing. This includes delivering a broad range of health, nutrition, social, education and other services.

Early Learning Indiana is thankful for its community and stakeholders who continue to support our mission to provide comprehensive, high-quality programming for infants and toddlers, which has long-term positive impacts on both children and their families.

## FISCAL DATA: SEPTEMBER 2022-AUGUST 2023

### Revenue:

Program Operation Grant: \$3,610,800

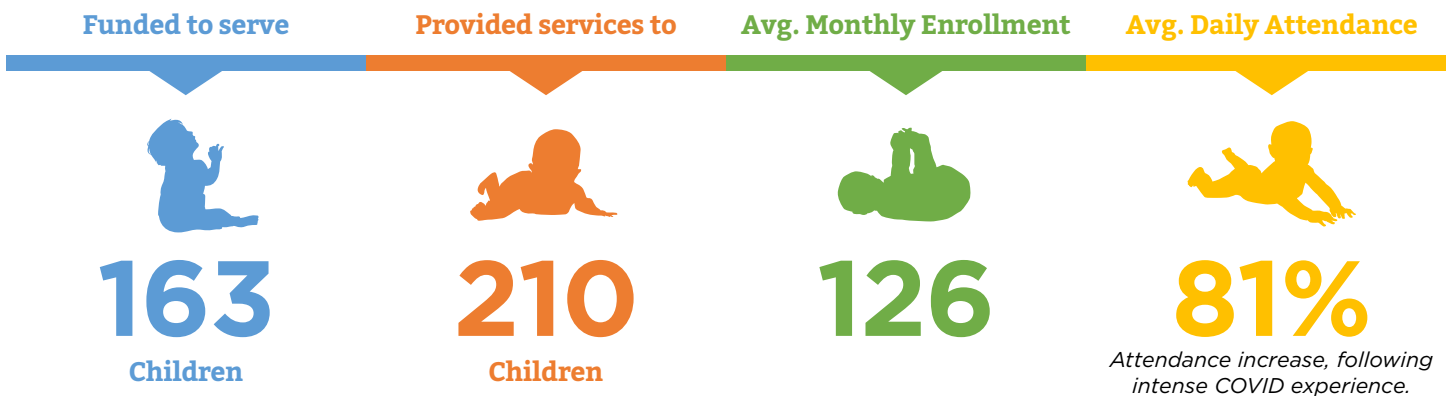
Public and Private Funds: \$131,062

TOTAL: \$3,741,862

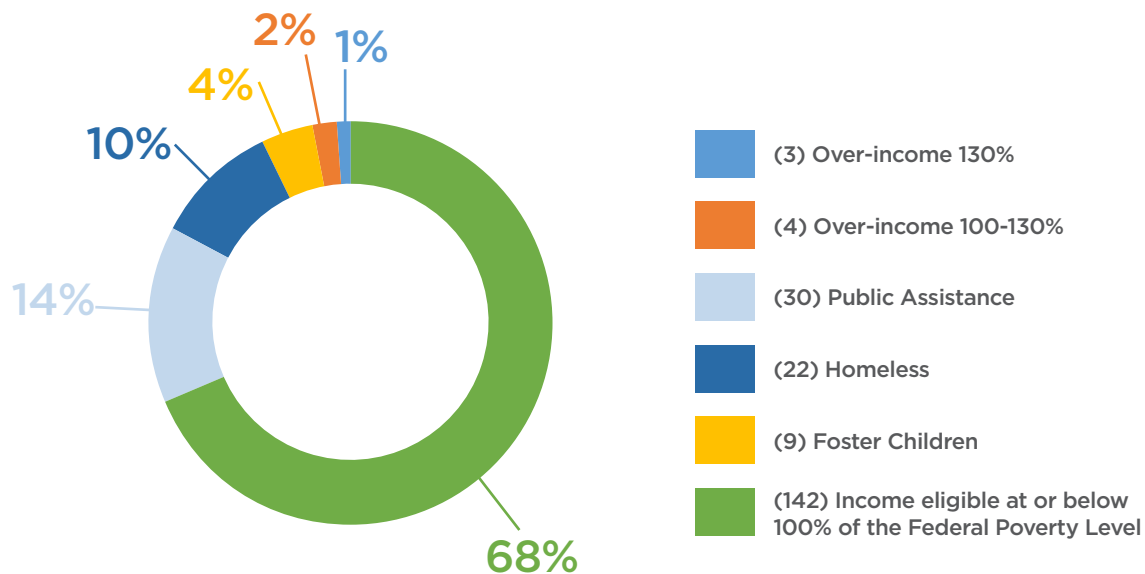
Expenses				
Categories	EHS Program Operations	EHS TTA	Total	ELI Total
Personnel	\$652,546	\$0	\$652,546	\$11,837,711
Fringe Benefits	\$133,806	\$0	\$133,806	\$3,574,511
Travel	\$0	\$49,471	\$49,471	\$143,311
Equipment	\$0	\$0	\$0	\$130,497
Supplies	\$40,877	\$0	\$40,877	\$210,294
Contractual	\$3,313,281	\$49,470	\$3,362,751	\$4,941,219
Construction	\$0	\$0	\$0	\$0
Other	\$225,123	\$0	\$225,123	\$52,519,870
Total Direct Charges	\$4,365,633	\$98,941	\$4,464,574	\$73,357,413
Indirect Charges	\$149,156	\$9,894	\$159,050	\$159,050
TOTALS	\$4,514,789	\$108,835	\$4,623,624	\$73,516,463

## RESULTS OF THE OFFICE OF HEAD START MONITORING REVIEW

Early Learning Indiana was monitored in June 2020 as a grantee. The Office of Head Start completed an in depth review of program design and management, education and child development program services, health program services, family and community engagement services, ERSEA and fiscal infrastructure. Early Learning Indiana made satisfactory progress in all content areas. The review results were shared with partners and key stakeholders. The team continues to use program data to inform how we provide high-quality learning experiences to the children and support entire families in progressing toward their goals for self-sufficiency. The foundation for school success includes proactively building positive habits. Early Head Start supports families in recognizing the importance of attendance and parental involvement.



### ELIGIBLE CHILDREN SERVED IN PROGRAM YEAR AUGUST 2022 - SEPTEMBER 2023



## HEALTHY AND READY TO LEARN

Comprehensive physical and dental health services ensure that infants and toddlers are able to learn and thrive. The Early Head Start Network team coordinates services provided at the program, as well as services offered in a home setting. As needed, families are given referrals to ensure children receive any resulting follow-up care.



**94%**

Children enrolled had established ongoing medical care.



**76%**

Children enrolled had established ongoing dental care.



**77%**

Children enrolled were up to date on immunizations.



## FAMILY SUPPORT AND ENGAGEMENT

The Early Head Start Network recognizes parents and caretakers as children's first and most influential teachers. As such, the Network partners with each family to address their individual needs, serving as an advocate while connecting them with resources that promote economic stability.



**63%**

of families completed two home visits.










## PREPARING CHILDREN FOR KINDERGARTEN

The Early Head Start Child Care Partners use the Creative Curriculum for Infants, Toddlers and Twos in classrooms, which promotes a holistic approach to each child’s development. Additionally, centers within the child care partnership network use Teaching Strategies Gold, an individual assessment tool aligned with Indiana State Standards as well as the goals described in the Head Start Early Learning Child Outcomes Framework. Teachers utilize data collected from observations, parent feedback and previous assessment data to intentionally plan for individual activities that build children’s skills and prepare them for kindergarten.

## PROGRESS ON SELECTED SKILLS

DEVELOPMENTAL SKILL	% OF CHILDREN WHO MEET OR EXCEED
 <b>SOCIAL EMOTIONAL</b>	<b>86%</b>
 <b>PHYSICAL</b>	<b>75%</b>
 <b>LANGUAGE</b>	<b>75%</b>
 <b>COGNITION</b>	<b>82%</b>
 <b>LITERACY</b>	<b>80%</b>